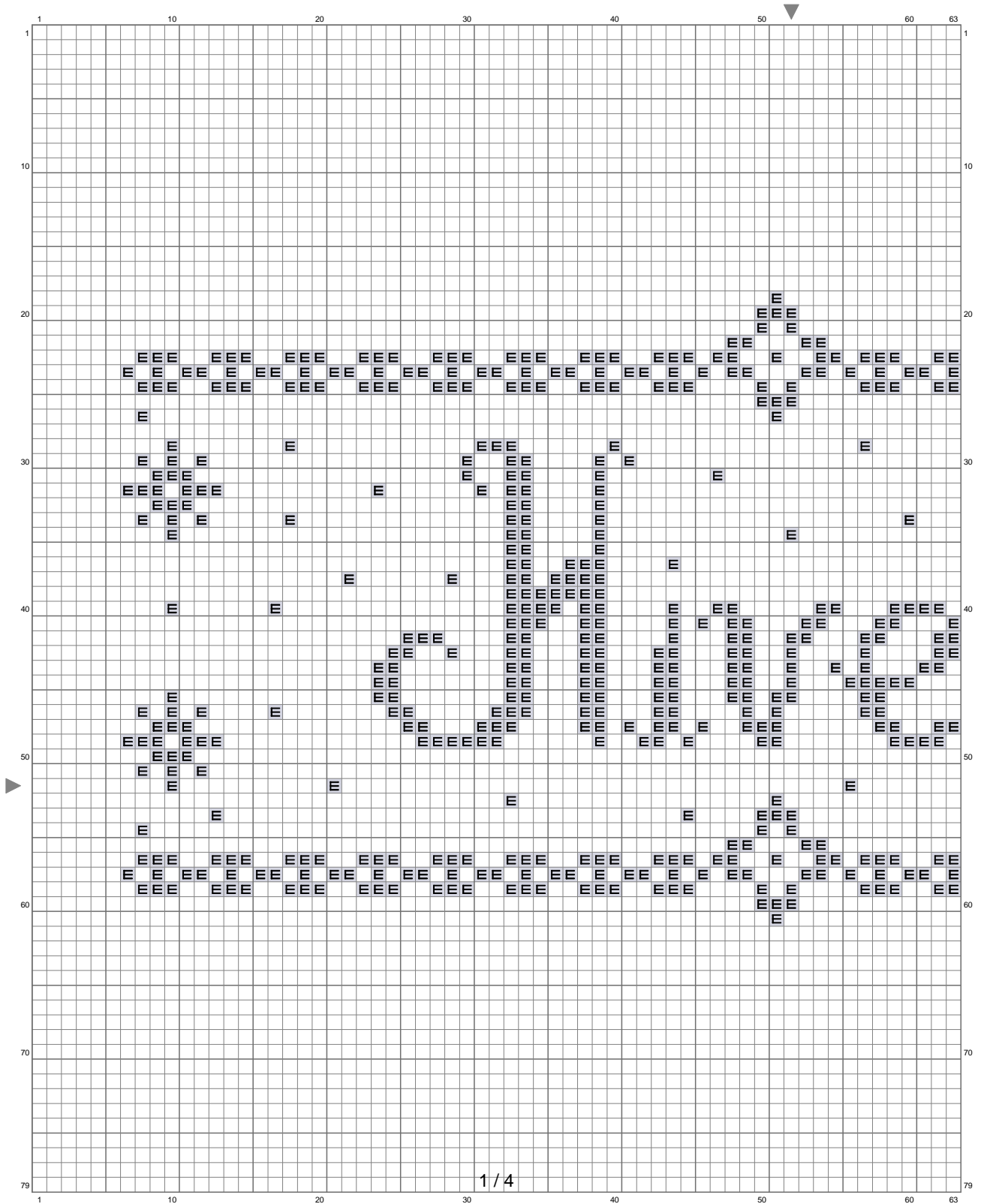
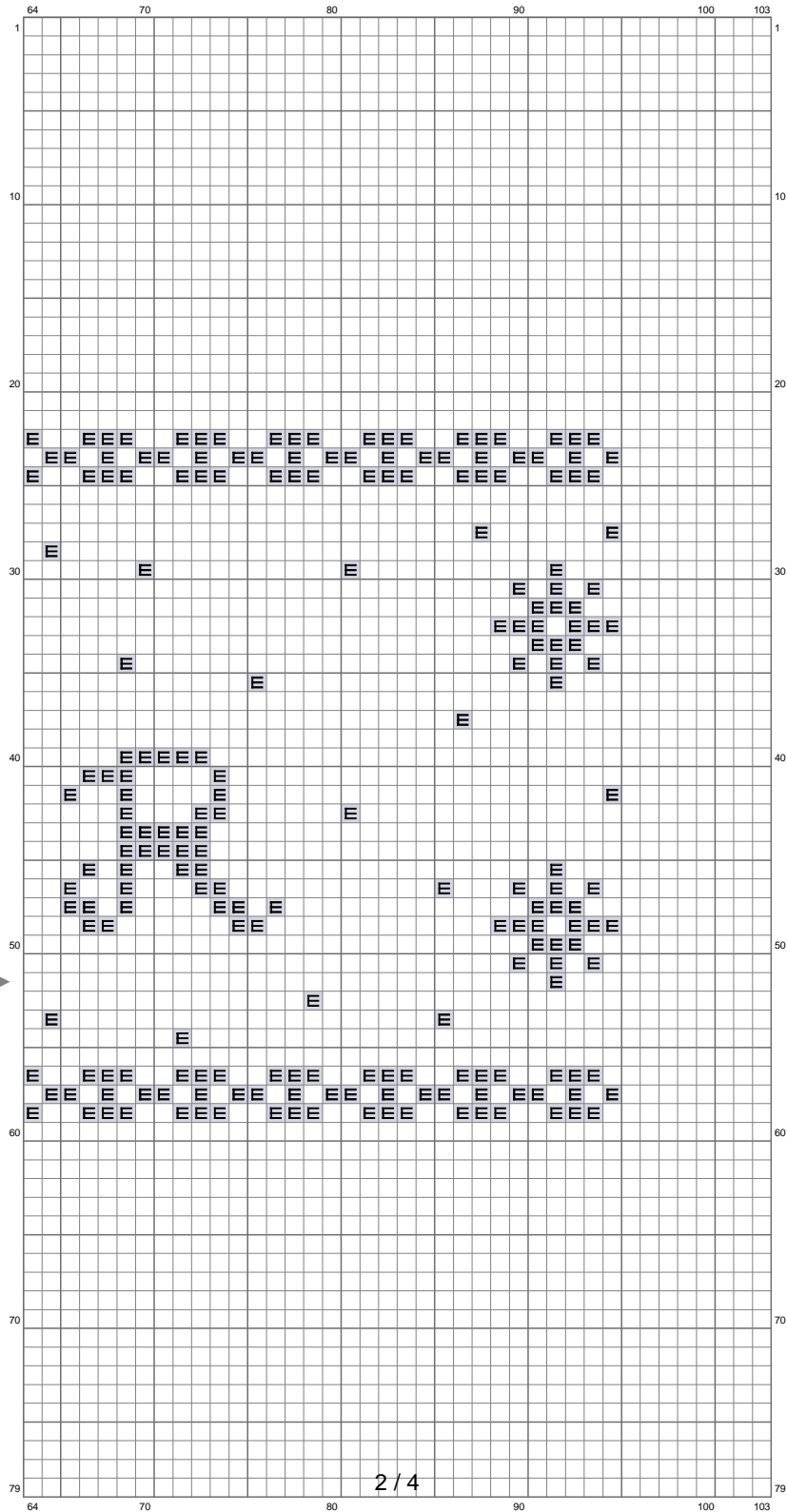


# HIVER

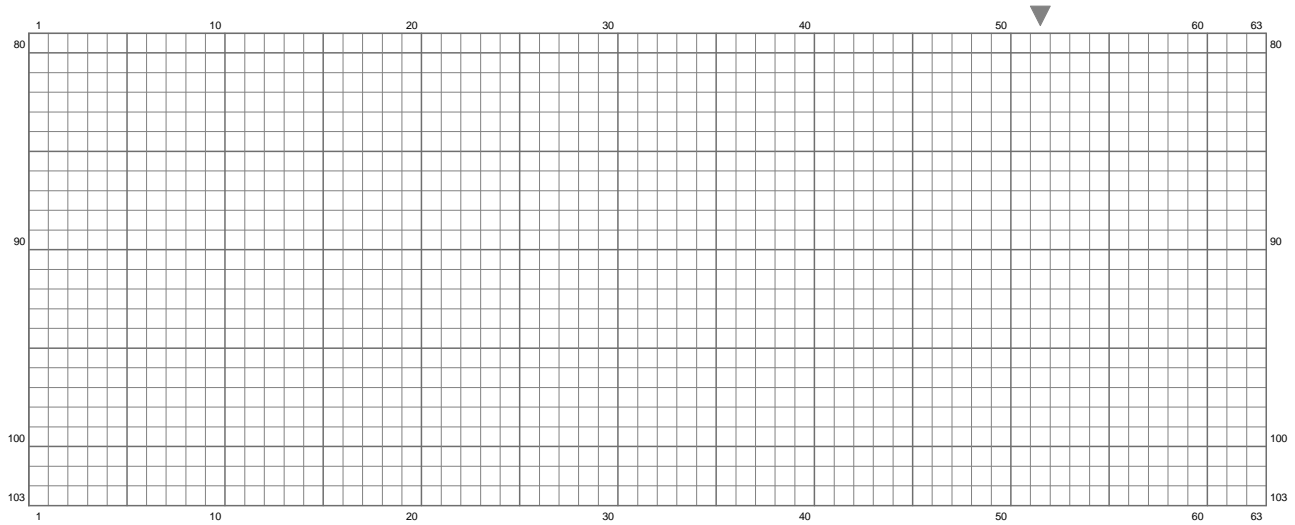


(This chart is printed using KG-Chart LE for Cross Stitch.)

# HIVER

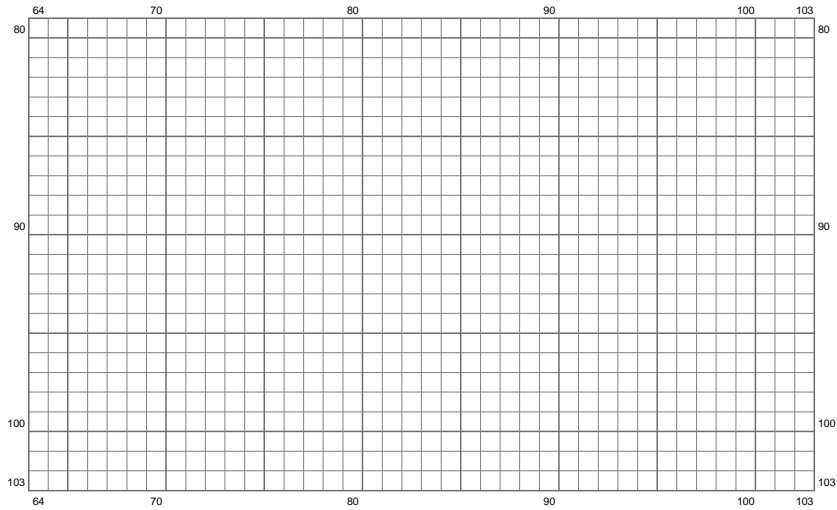


# HIVER



(This chart is printed using KG-Chart LE for Cross Stitch.)

# HIVER



(This chart is printed using KG-Chart LE for Cross Stitch.)

Stitch Count: 103w x 103h

Finished Size: 20.6 cm x 20.6 cm (10 linen thread/cm)

Cloth: <http://zabroderie.canalblog.com>

Cloth's Color: White

# of colors: 1 Colors

Color Table (DMC)

---

## **Cross Stitch**

 415 (695 ct)