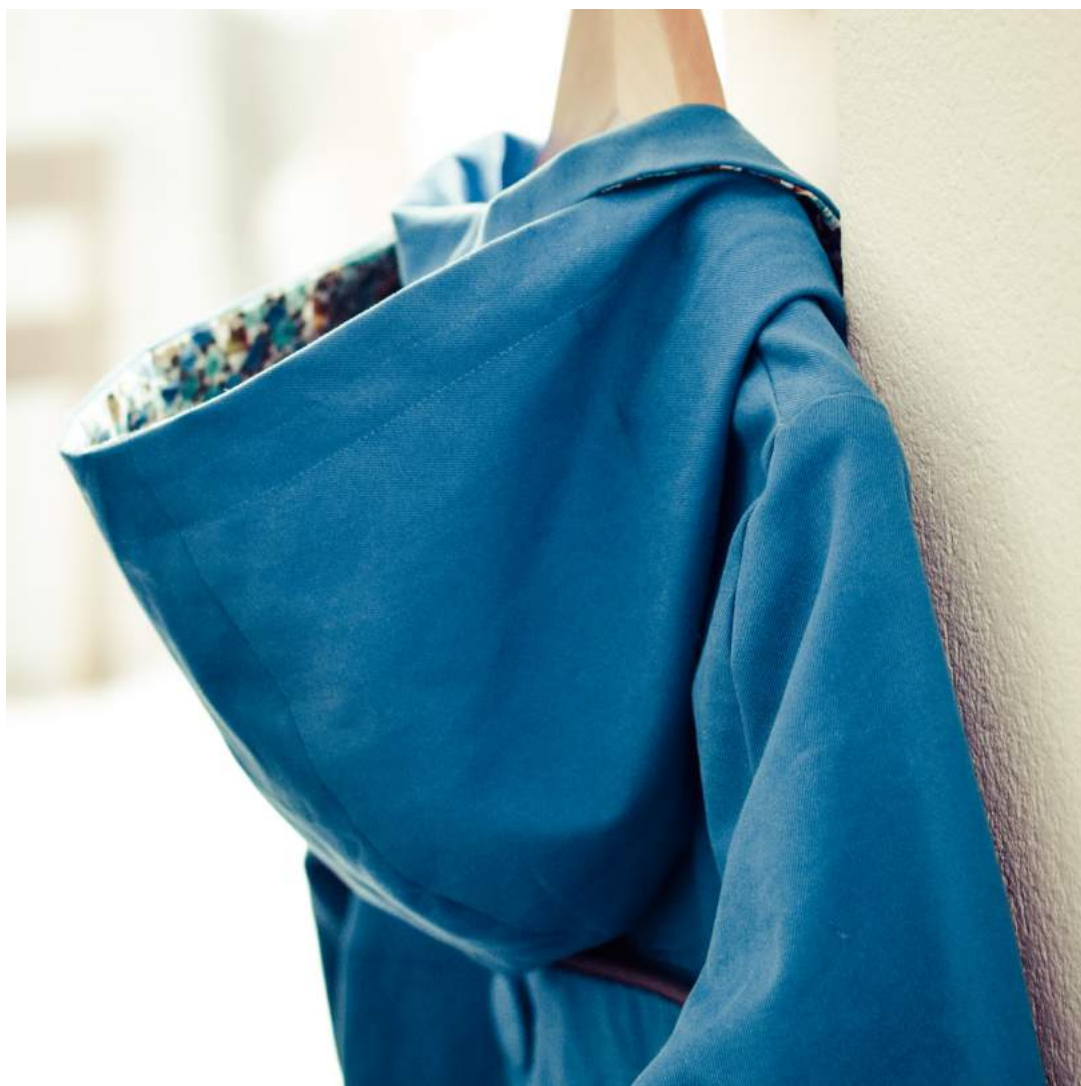


## THE AGATHA'S HOOD



### DETACHABLE HOOD FOR THE AGATHA JACKET

*Sizes 2, 3, 4, 6, 8 and 10*



**PREAMBLE**

This detachable hood is designed for the Agatha jacket. However this hood can be sewn onto any jacket or coat as long as the hood's neckline edge matches the length of the neckline you want to sew it on.

**SUPPLIES**

**Suggested fabrics:** Heavyweight cotton, linen, gabardine, corduroy, denim, laminated cotton...

**Notions:** Five 10-mm (3/8") buttons

**MEASURES** (cm and yard)

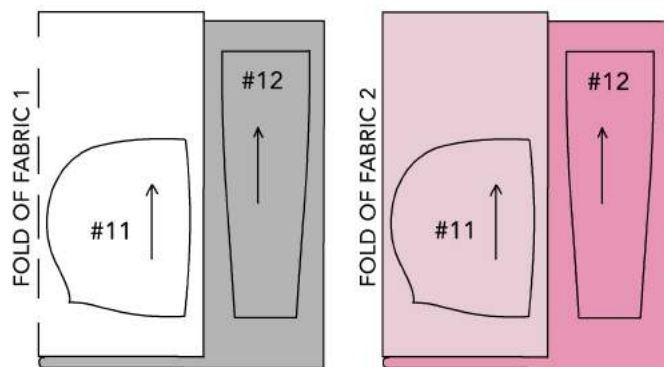
	2Y	3Y	4Y	6Y	8Y	10Y
Fabric 1 (main fabric) (Length x Height)	60 x 40 cm 5/8 x 1/2	60 x 40 cm 5/8 x 1/2	65 x 45 cm 3/4 x 1/2	65 x 45 cm 3/4 x 1/2	65 x 45 cm 3/4 x 1/2	70 x 50 cm 7/8 x 1/2
Fabric 2 (lining fabric) (Length x Height)	60 x 40 cm 5/8 x 1/2	60 x 40 cm 5/8 x 1/2	65 x 45 cm 3/4 x 1/2	65 x 45 cm 3/4 x 1/2	65 x 45 cm 3/4 x 1/2	70 x 50 cm 7/8 x 1/2

**PATTERN PIECES**

#11 – Side hood, cut twice in fabric 1 and twice in fabric 2

#12 – Center Hood, cut once in fabric 1 and once in fabric 2

The hood in fabric 1 is lined with fabric 2.

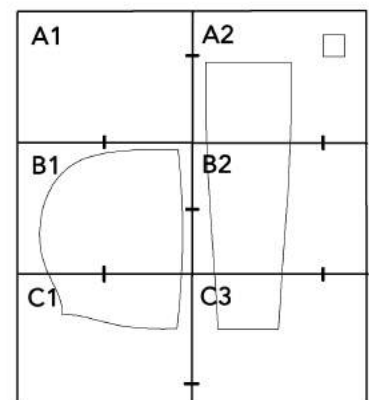


Pattern pieces #11 and #12 are in the "AGATHA Capuche-Hood.pdf" file included with this tutorial.

Make sure you print this pattern at 100%, or with « no scaling » checked on your printer. Use the 5x5cm square to check that you have printed the pattern right.

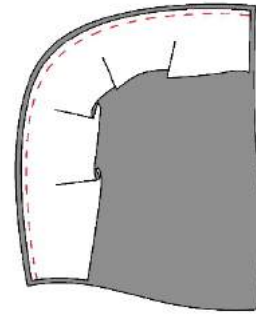
You can cut the borders around the pages, but it's not compulsory. Tape the pages together following the page layout below. Match the small rectangles, but lining the edges of the pages is of no importance.

You can then cut the chosen size of the pieces directly from the printed pattern and lay them on your fabric (*seam allowances are included*).

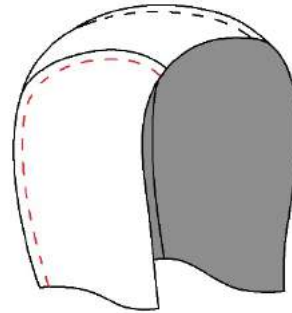


## ASSEMBLING

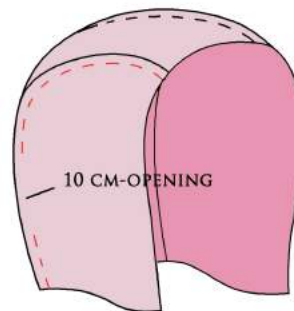
- With right sides together, pin one of the long edges of center hood #12 in fabric 1 to the curved edge of one of the side hoods #11 in fabric 1, the narrowest part of the hood being the neckline.
- Stitch at 1cm from the edge and press the seam open.



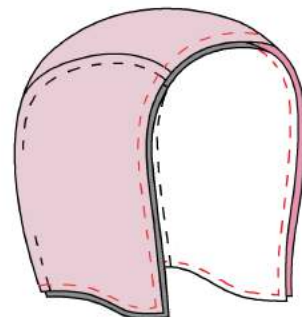
- Repeat the process for the other side hood #11 in fabric 1 on the other side of center hood #12 in fabric 1.



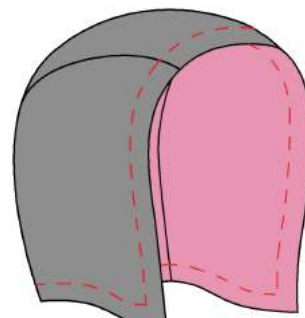
- Repeat the whole process for the hood pieces in fabric 2.
- Warning:** Please leave a 10cm-opening on one side.



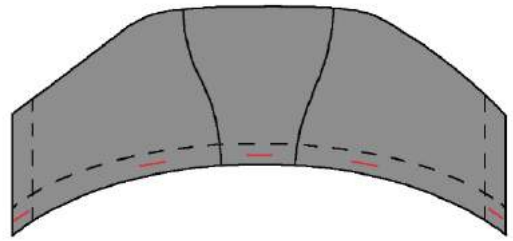
- With right sides together, pin both hoods together (*fabric 1 and fabric 2*). In a continuous seam, stitch around the head and the neckline, at 1cm from the edge.
- Clip the corners and the neckline and turn the hood on the right side through the hood facing's opening.
- Hand-stitch this opening closed and press.



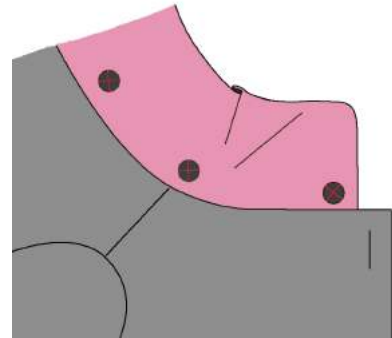
- Topstitch around the head, at 2.5cm from the edge. Repeat for the neckline.



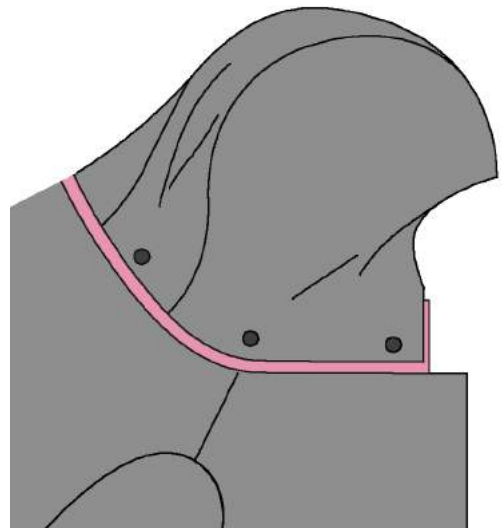
- Stitch 5 buttonholes (for 10mm-buttons) at the markings around the neckline of the hood: two are sewn on the bottom of each Side Hood #11 and one is at the bottom of the Center Hood #12.



- Sew 5 10mm-buttons on the wrong side of the collar where indicated (facing their respective buttonholes), sewing only through the facing, making the stitches unnoticeable from the right side.



- Fasten the hood to the jacket collar with the buttons and buttonholes.



Voilà! So, do you like it?!