

CAT BACKPACK

approx. size 25 cm x 30 cm

MATERIALS

- 30 cm fake fur for backpack exterior
- 30 cm cotton for backpack lining
- 25 cm velour
- 20 cm wadding for flap
- approx. 60 cm ribbon for shoulder straps, width 30 mm
- 20 cm interfacing
- stuffing wadding
- fabric scraps for eyes and mouth
- piece of striped fabric/tricot knit for tail
- double-sided fusible interfacing (Vlieseline® Vliesofix)
- tear-away backing (Vlieseline® Stickvlies)
- embroidery thread
- sew-on magnetic button or snap

PATTERN PIECES

	cut		
	fur	lining	velour
1 front panel	1	1	
2 back panel	1	1	
3 bottom panel	1	1	
4 flap			2
5 shoulder-strap piece			2
6 paw			4
7 ear	2		2
8 tail (striped)			2

PATTERNS

Trace pattern pieces from pattern sheet. Add seam allowances before cutting backpack pieces out from fabric!

CUTTING

Cut backpack pieces as indicated on list of pattern pieces. Cut one flap piece also from wadding. Cut cat's tail from striped tricot knit. Cut eyes and mouth from fabric scraps and from double-sided interfacing without adding seam allowances.

Cut also from cotton fabric:

- drawstring casing 6 cm x 52 cm
- drawstring 3.5 cm x 80 cm

SEWING

Preparation: Iron interfacings onto pieces shaded in grey in small-scale patterns.

Drawstring casing: Sew narrow hems at both ends of drawstring casing strip, fold strip in half lengthwise, wrong sides together, and machine-baste its bottom edges together. Prepare drawstring: Fold strip in half lengthwise, fold in seam allowances (edges meet at centre) and topstitch close to edge. Thread drawstring into casing.

Ears: Pin and stitch ear pieces together in pairs, leaving bottom edges unstitched. Turn ears right side out.

Flap: Machine-baste wadding to wrong side of one flap piece along seam allowance and appliqué **cat's face** on flap piece. **1.** Fuse eyes and nose in place with double-sided interfacing.

2. Pin piece of tear-away backing to wrong side of flap, behind area of motif. **3.** Appliqué eyes and nose with narrow, short zigzag and mouth using slightly wider stitch. **4.** Embroider cat's

whiskers with reinforced straight stitch. Remove tear-away backing from wrong side of flap.

Pin flap pieces together, right sides facing, and stitch curved outer edge. Turn flap right side out and machine-baste its top-edge seam allowances together. Machine-baste ears to top edge of flap (velour-side facing flap) as marked on pattern.

Shoulder straps: Cut ribbon precisely in half. Fold shoulder-strap pieces in half lengthwise, right sides together, and stitch their long edges. Insert ribbon into shoulder-strap piece and stitch end of strap. Turn shoulder strap right side out by pulling at ribbon. Machine-baste shoulder straps to seam allowances of backpack's back panel as marked on pattern, placing velour end of strap at top edge of panel and ribbon end at bottom edge of panel. Machine-baste flap to top edge of back panel, right sides facing, with shoulder straps in between.

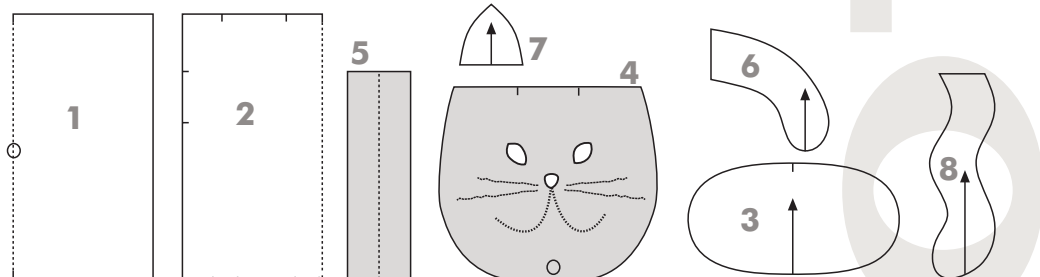
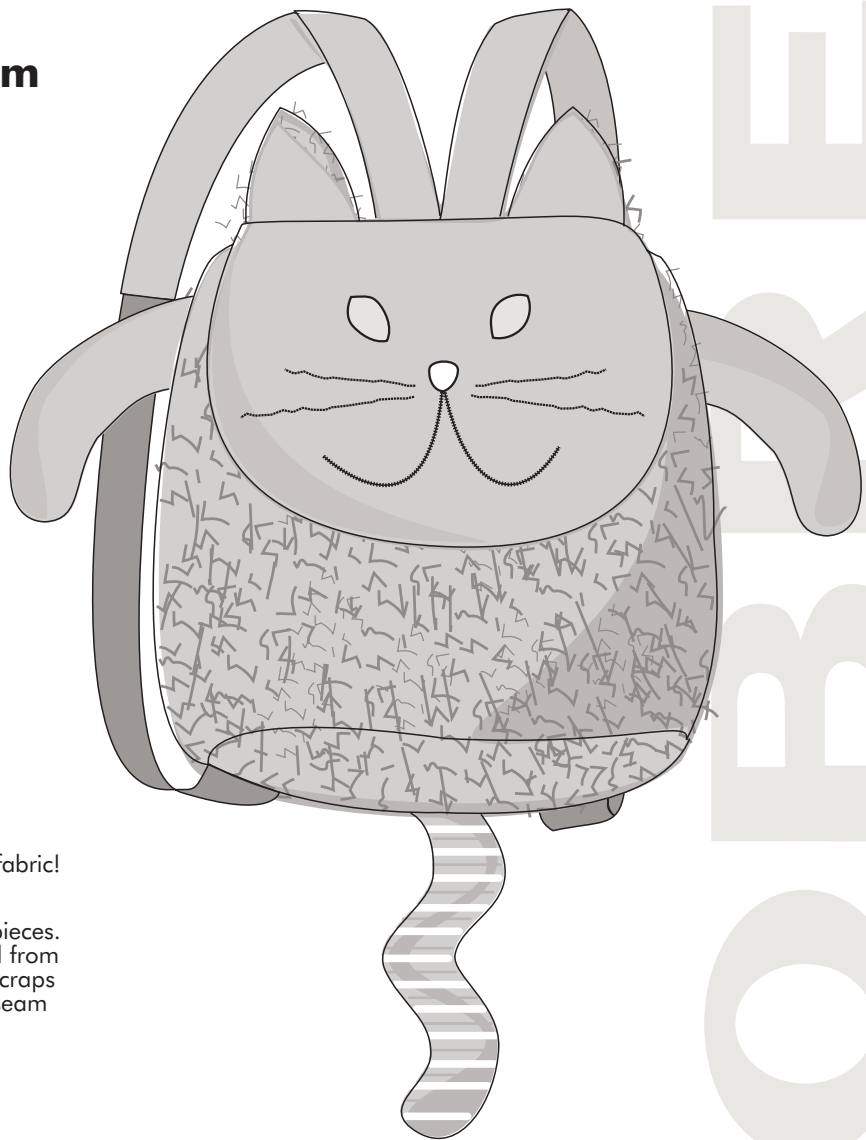
Paws and tail: Stitch both paw and tail pieces

together in pairs, right sides facing. Turn paws and tail right side out and stuff them with wadding. Machine-baste paws and tail to backpack's back panel as marked on pattern.

Constructing backpack: Stitch front and back panels of backpack exterior together. Stitch bottom panel to front and back panels, right sides together. Construct lining in the same way, leaving small opening at side seam for turning backpack right side out. Pin drawstring casing to top edge of backpack exterior, placing ends of casing at center front.

Joining backpack exterior and lining: Place backpack exterior and lining within one another, right sides facing, and stitch along top edge. Turn backpack right side out and close opening at side seam.

Closure: Sew one half of magnetic button to underside of flap and the other half to backpack as marked on pattern.



DESIGN and REALISATION

studio
TUUMAT
design factory

COPYRIGHT © Studio Tuumat Oy

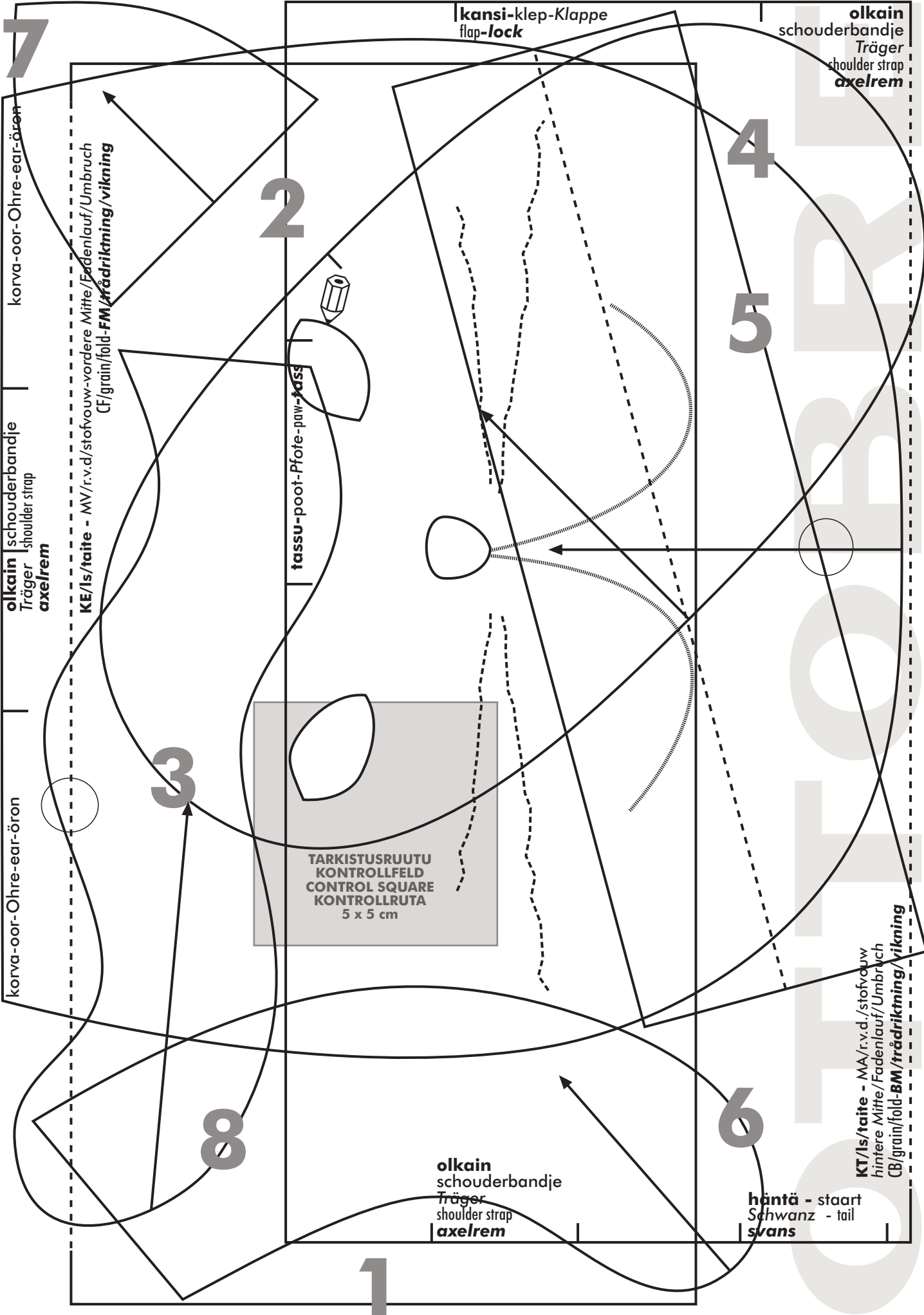
STUDIO TUUMAT OY

PL/PO Box 46

90401 OULU

FINLAND

info: ottobre@ottobre.fi



korva-oor-Ohre-ear-öron

olkain schouderbandje
Träger
axelrem

korva-oor-Ohre-ear-öron

KE/Is/taite - MV/r.v.d./stofvoew-vordere Mitte/Fadenlauf/Umbruch
CF/grain/fold-FM/trådriktning/vikning

tassu-poot-Pfote-paw-tass

kansi-klep-Klappe
flap-lock

olkain
schouderbandje
Träger
shoulder strap
axelrem

TARKISTUSRUUTU
KONTROLLFELD
CONTROL SQUARE
KONTROLLRUTA
5 x 5 cm

olkain
schouderbandje
Träger
shoulder strap
axelrem

hantä - staart
Schwanz - tail
svans

KT/Is/taite - MA/r.v.d./stofvoew
hintere Mitte/Fadenlauf/Umbruch
CB/grain/fold-BM/trådriktning/vikning

7

2

4

5

3

8

6

1